

PHOTO QUIZ

Do you harvest what you sow?

R.A. Hannivoort^{1,2}, A.P.J. Vlaar¹

Departments of ¹Intensive Care Medicine and ²Anesthesiology, Academic Medical Center, Amsterdam, the Netherlands

Correspondence

R.A. Hannivoort - r.a.hannivoort@amc.uva.nl

Case

A previously healthy 42-year-old male presented to our emergency department with severe dyspnoea. He had been complaining of cough since aspirating some swimming pool water at a sauna in Finland five weeks previously. Five days before presentation at our hospital he visited his general practitioner, who prescribed amoxicillin for suspected pneumonia.

At presentation, he was in severe respiratory distress. His oxygen saturation was 54% at room air, improving to 84% with 15 l/min of supplemental oxygen. His respiratory rate was 30/min. Auscultation revealed crackles bilaterally at the basal lung fields. His blood pressure was 145/85 mmHg with a regular pulse of 118 beats/min and he had a fever of 40°C. Laboratory studies showed a leucocytosis of $19 \times 10^9/l$ and a CRP of 602 mg/l. A chest X-ray revealed extensive bilateral consolidations (figure 1). Microbial cultures were obtained and he was started on cefotaxime and erythromycin. Gram staining was negative as was urinary analysis for *Legionella* antigen.

He was admitted to our intensive care unit and intubated for mechanical ventilation. He required high ventilator pressures to maintain adequate oxygenation, and we instituted intermittent prone position ventilation.

What is your diagnosis?

Answer

You will find the answer on page 145 in this issue.

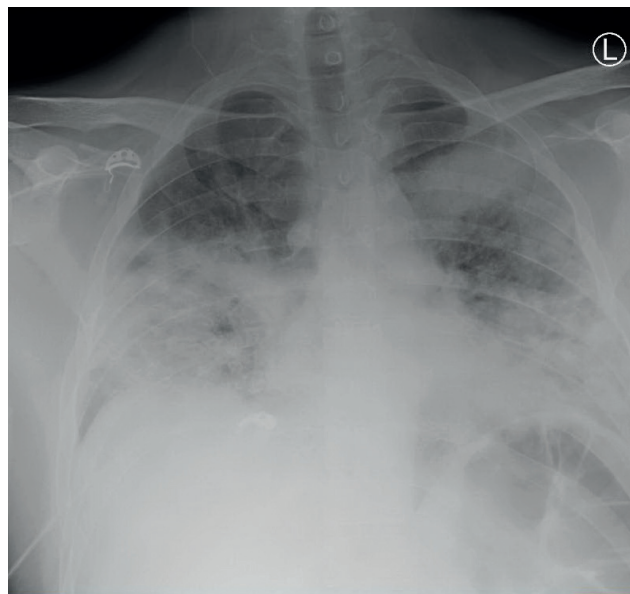


Figure 1. Chest X-ray showing extensive bilateral consolidations